

Tandem Mobi™

Quick Reference



Tandem Mobi System

Contents

- Using the Pump Button..... 2
- Pump Status Lights.....3
- Understanding the Color Coding.....4
- Pump Status and Actions..... 6
- Alerts and Alarms.....8
- Delivering a Quick Bolus10
- How to Charge the Pump.....12
- Pump Battery Level.....14

Using the Pump Button

- ✓ **Snooze Alerts and Alarms:** Three quick button press and releases in succession (the Snooze feature must be enabled)
- ✓ **Check Pump Status:** Single quick button press and release (slight delay between button push and the pump status lights illuminating is expected)
- ✓ **Quick Bolus:** Press and hold the Pump button until you hear two beeps or feel vibrations (if enabled). Refer to the section on Delivering a Quick Bolus (pages 10-11) for additional information.

■ **Note:** The Pump button is used for additional functions than listed. Please refer to the user guide for more detail.

Pump Status Lights

Above the Pump button, you'll find two lights. These are the pump status lights.

The pump status lights use different colors and different blinking light patterns to communicate the pump's status.

To check the pump's status, simply press the Pump button once. The lights will illuminate and communicate what the pump is doing.



Understanding the Color Coding

The pump status lights use different colors to indicate status. See Pump Status and Actions section on next page for details.



Green Represents

Either basal delivery (standard or Temp Rate) or confirmation of an action from the smartphone



Blue Represents

Either a bolus delivery or the tubing is being filled during cartridge load



White Represents

Either the insulin pump is charging or the insulin delivery has been stopped manually



Yellow Represents

Either an alert or reminder; check your Tandem Mobi mobile app



Red Represents

Either an alarm or malfunction; all insulin deliveries have been stopped

▲ Warning: Immediate attention is required for alarms and malfunctions. Test your blood glucose if you are unable to check your smartphone.

Pump Status and Actions

The following patterns appear when you check your pump status by pressing the Pump button, or when you initiate an insulin delivery.



Basal Rate Delivery

Lights are alternating and pulsating green



Temp Rate Delivery

One light is solid green and the other light is pulsating green



Bolus Delivery

Lights are alternating and pulsating blue



Extended Bolus Delivery

One light is solid blue and the other light is pulsating blue

Alerts and Alarms

Using blinking light patterns, the insulin pump will communicate an alert, alarm, or malfunction, or when insulin delivery has been manually stopped.

▲ Warning: Test your blood glucose if you are unable to check your smartphone for messaging on any alert, alarm, or malfunction.



Pump Reminder

Both lights blink yellow once



All Deliveries Stopped Manually

Both lights blink white three times



Pump Malfunction or Alarm ▲

Both lights blink red three times



Pump or CGM Alert ▲

Both lights blink yellow two times

Delivering a Quick Bolus

Read all steps before starting.



Press and hold the **Pump** button



Listen for two beeps or feel vibrations (depending on your Sound settings)



Press the **Pump** button for each increment until desired amount is reached. The pump will beep/vibrate with each button press.

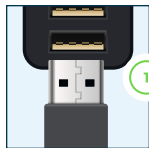
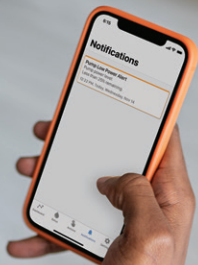


Wait for the pump to beep/vibrate once for each increment pressed to confirm desired amount



After the pump beeps/vibrates, press and hold the **Pump** button until a confirmation beep/vibration occurs to deliver the bolus

How to Charge the Pump



Ensure the charging pad is connected to a power source using the provided USB cable



Place the pump on top of the charging pad within the outlined charge nest



Ensure the charging pad illuminates when the insulin pump is initially placed

Pump Battery Level

In order to determine the pump battery level without the Tandem Mobi mobile app, **the pump MUST be placed on the charging pad.**

The pump status lights will light up to indicate battery charge level.



Charging Pad Light



Note: When the pump is initially placed, the charging pad will light up for 30 seconds to indicate charging and then dim.

Pump Battery Level

In order to determine the pump battery level, **the pump MUST be placed on the charging pad.**



Under 50% Charge

One light will pulsate white



No Charge to Very Low Charge

No lights or one light will pulsate red



Above 50% Charge

One light will stay solid white, one light will pulsate white



Fully Charged

Both lights will dim



Learn More: Please review your user guide for more information.



TANDEM™
Diabetes Care

🏢 Tandem Diabetes Care, Inc.

12400 High Bluff Drive • San Diego, CA 92130 • USA
+1-858-255-6269 • tandemdiabetes.com

2025-FEB-1

© 2025 Tandem Diabetes Care, Inc. All rights reserved. Tandem Diabetes Care, the Tandem logo, and Tandem Mobi are either registered trademarks or trademarks of Tandem Diabetes Care, Inc. in the United States and/or other countries.

1012858_C
AW-1012865_C